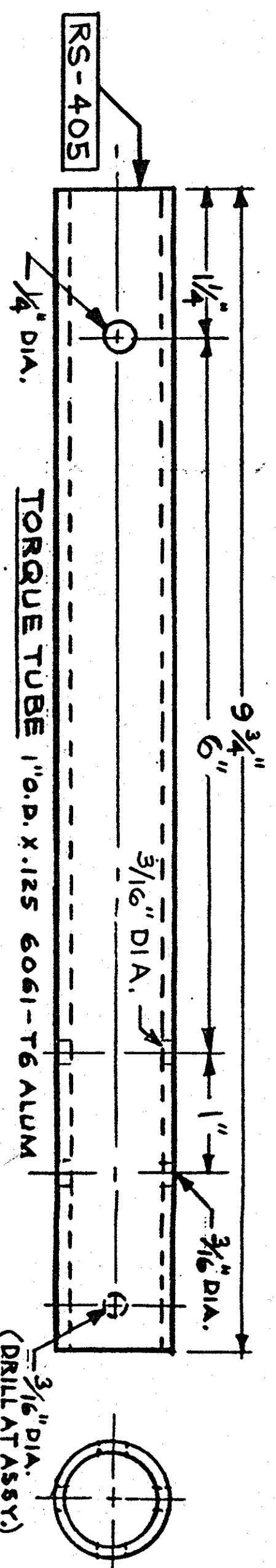


ANGLE BRACKET
(RS-201) SCALE: 1"=1" (1 REQ'D.)

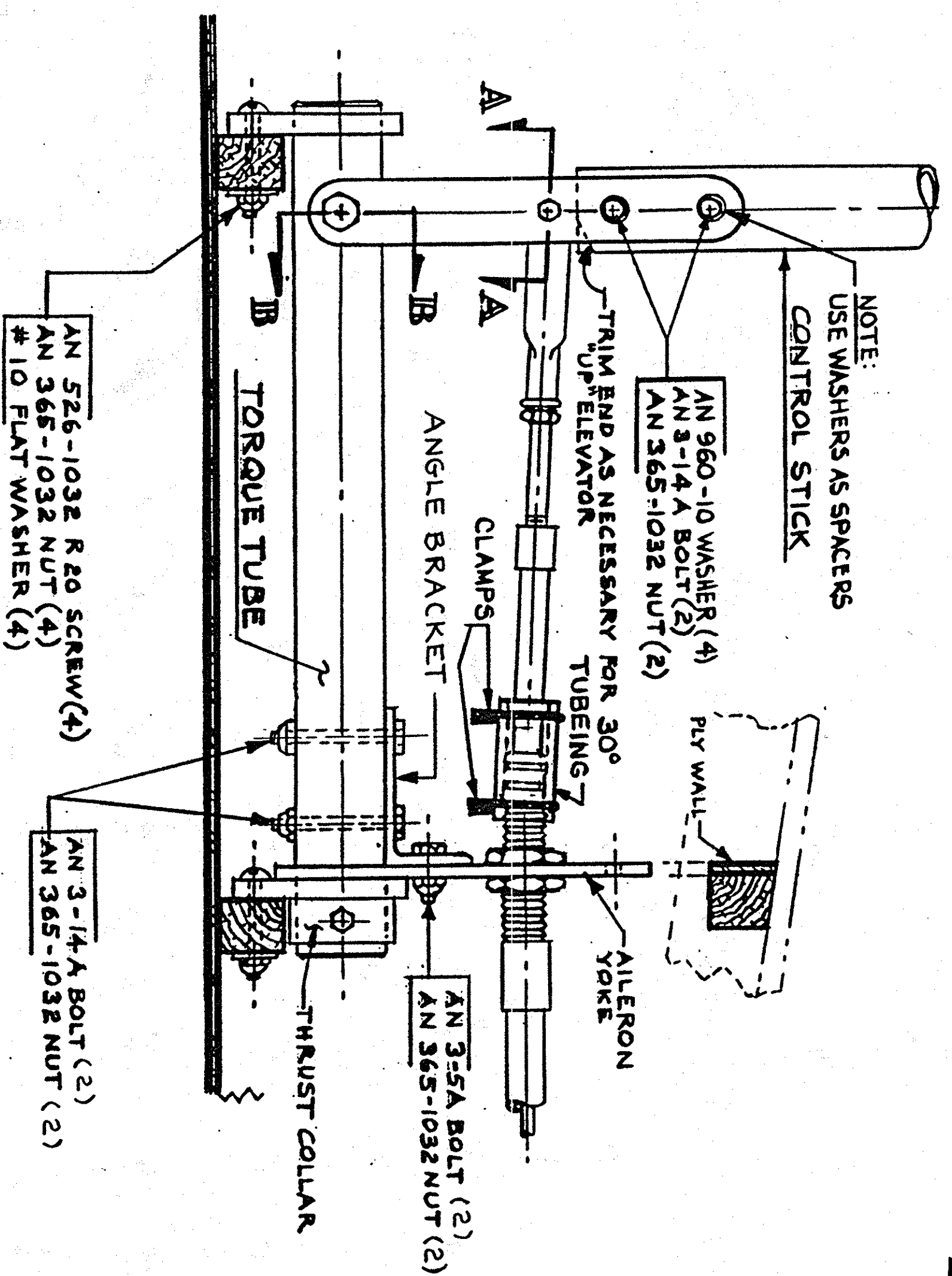
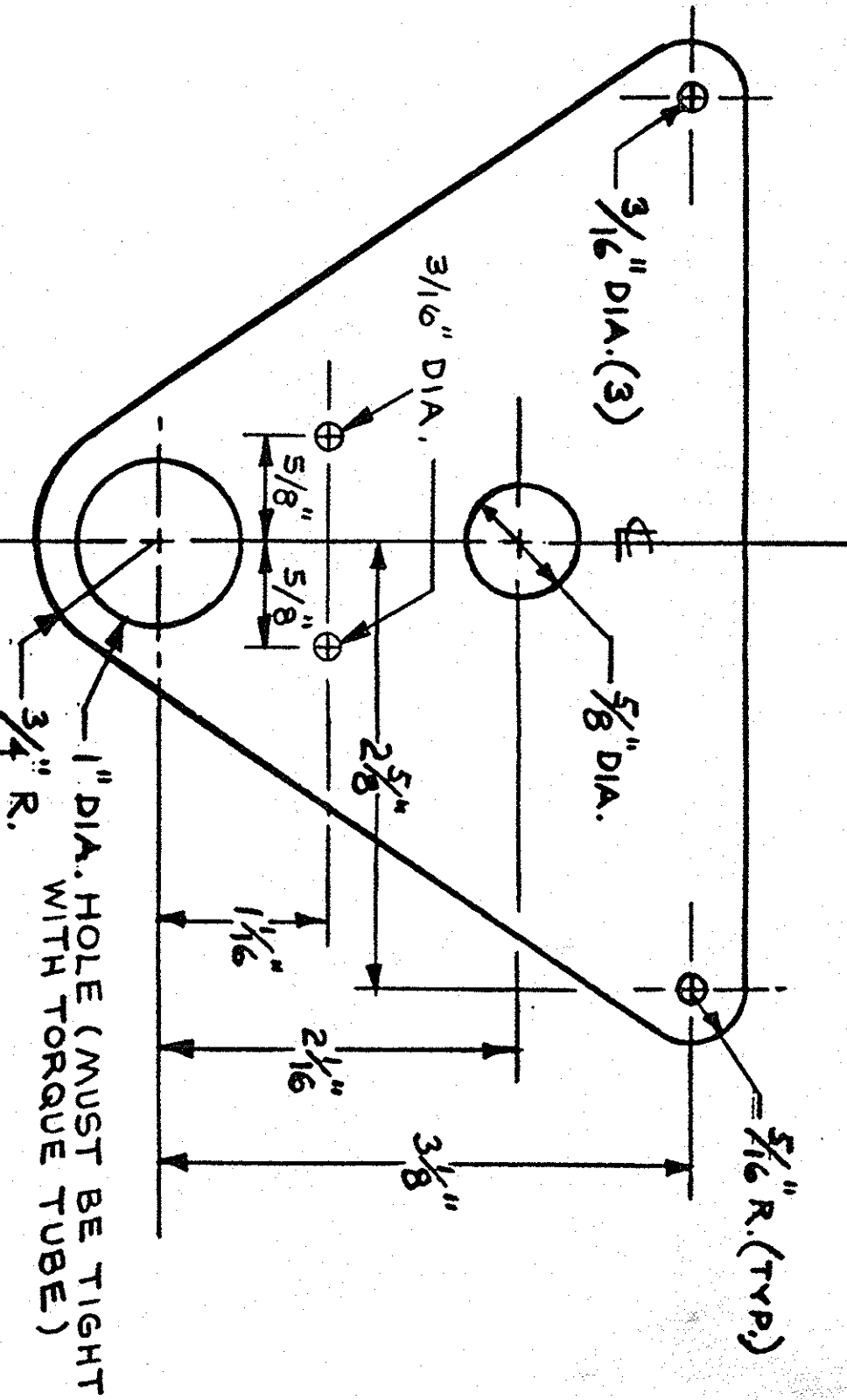
ANGLE BRACKET MODIFICATION

NOTE: THIS MODIFICATION SHOULD BE INCORPORATED IN ALL AIRCRAFT USING THE STANDARD TORQUE TUBE AND YOKE CONFIGURATION WITH THE RS-200 ANGLE BRACKET.

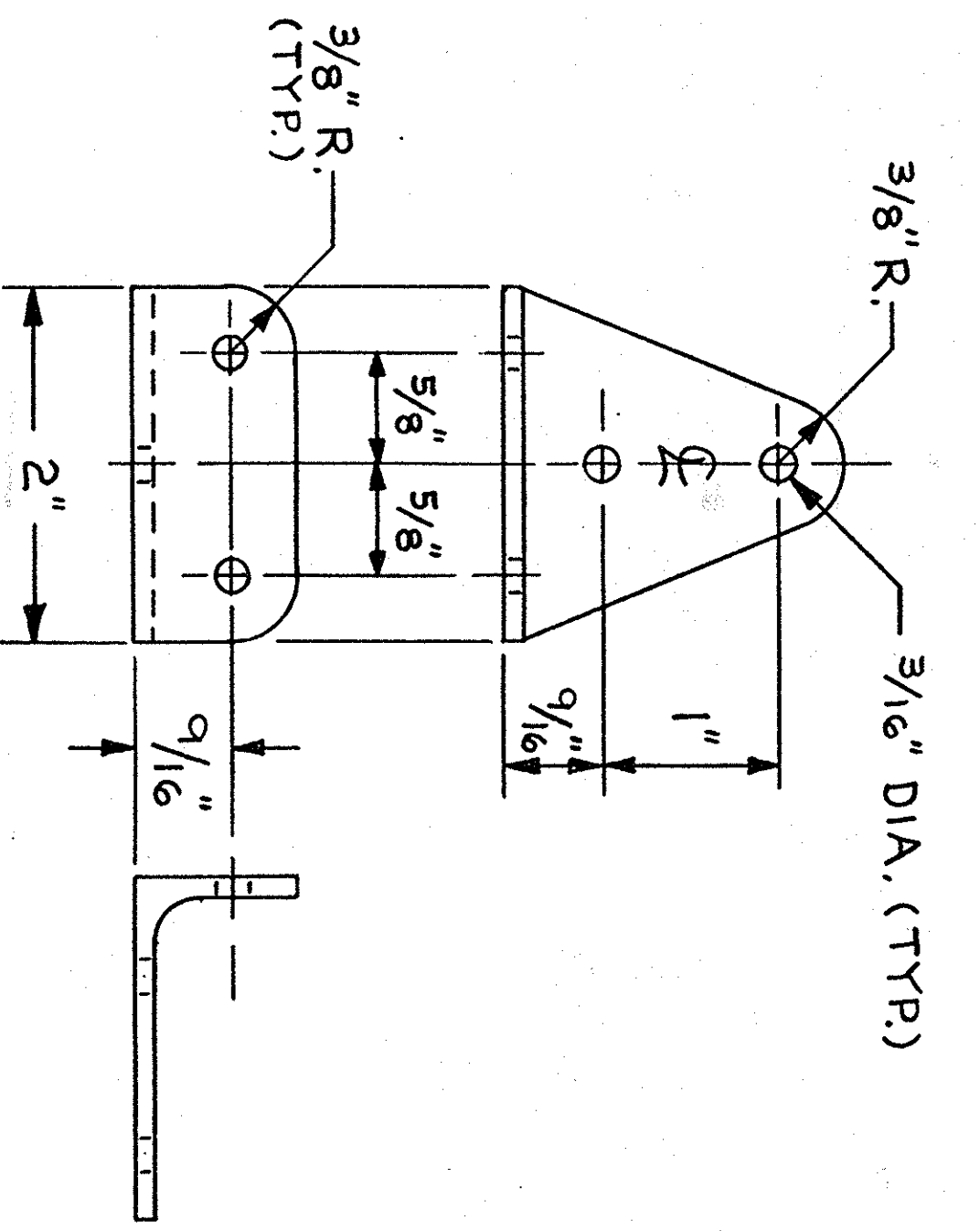
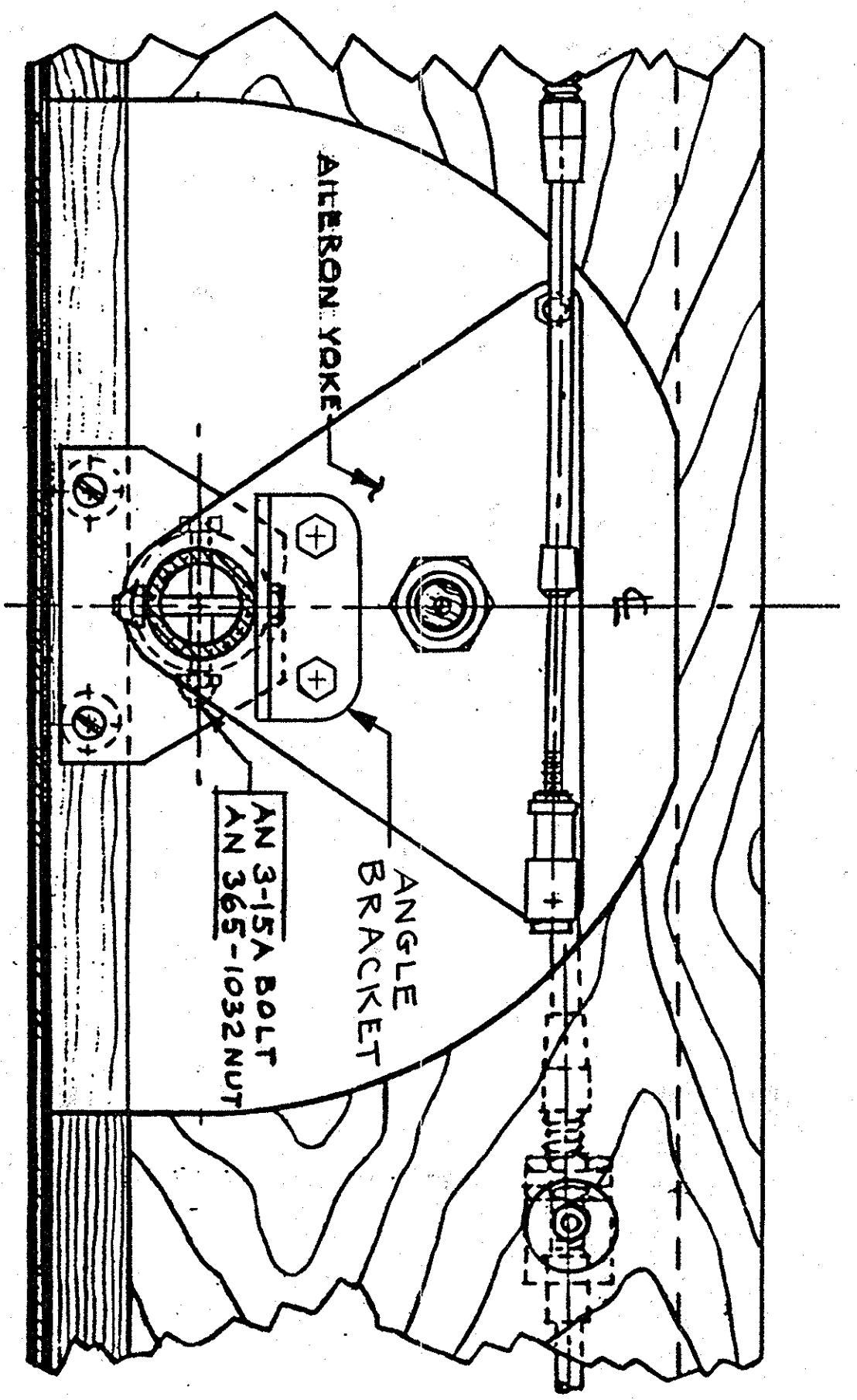
- INSTALLATION INSTRUCTIONS:**
1. FABRICATE ANGLE BRACKET FROM RS-201 AND ASSEMBLE AS SHOWN ON DRAWINGS.
 2. NOTE: AN 3-14A BOLTS ARE INSERTED FROM THE TOP THROUGH ANGLE BRACKET AND TORQUE TUBE. NUTS ARE ON THE BOTTOM. *(DO NOT INSERT BOLTS FROM BOTTOM AND PUT NUTS ON TOP)*
 3. TIGHTEN NUTS AND INSPECT ASSEMBLY FOR INTEGRITY.



ALLERON YOKE - 1/8" ALUM. [RS-500]
(SEE DWG. NO. 10 FOR LAYOUT)



ISON Aircraft
SUPPLEMENTAL SHEET
DATE: 3-22-96
DWG. TITLE: ANGLE BRACKET MODIFICATION
DWG. NO: 101

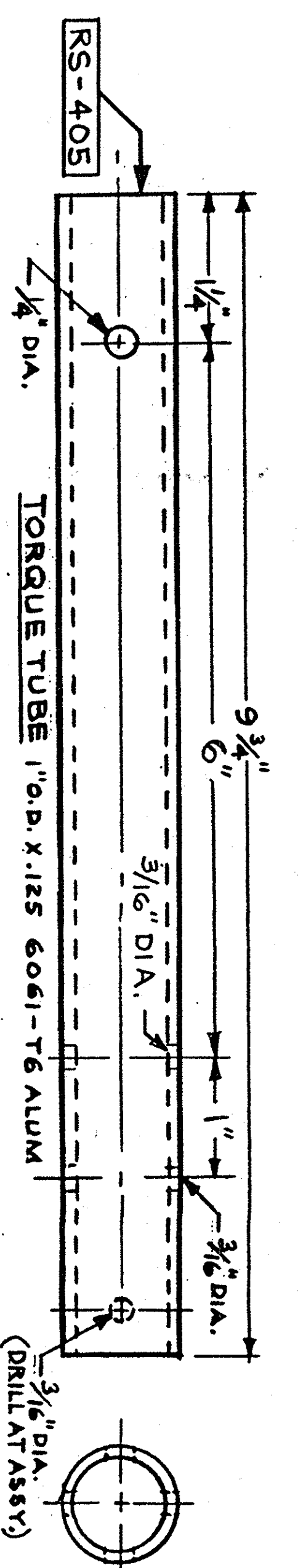


ANGLE BRACKET
(RS-201) SCALE: 1"=1" (1 REQ'D.)

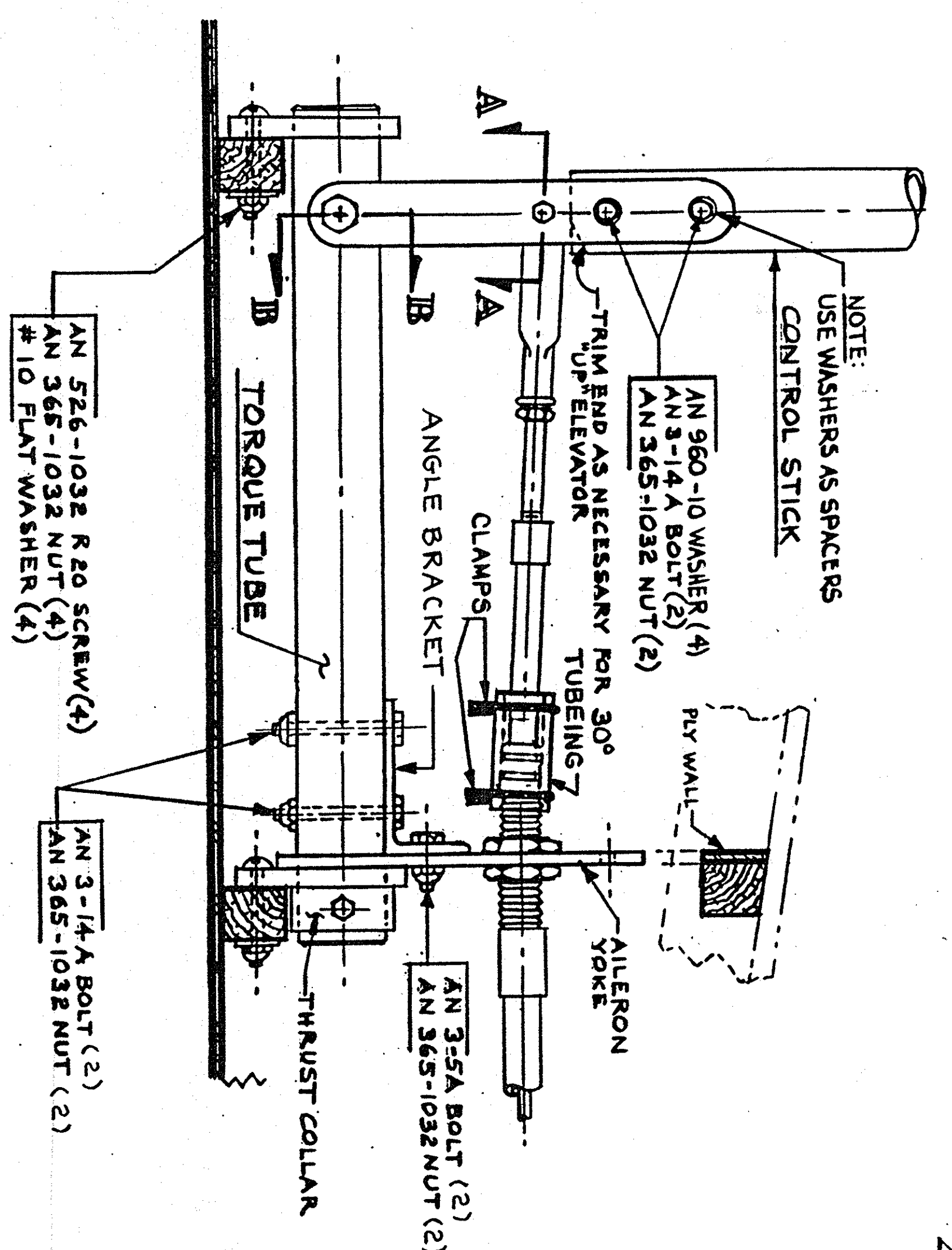
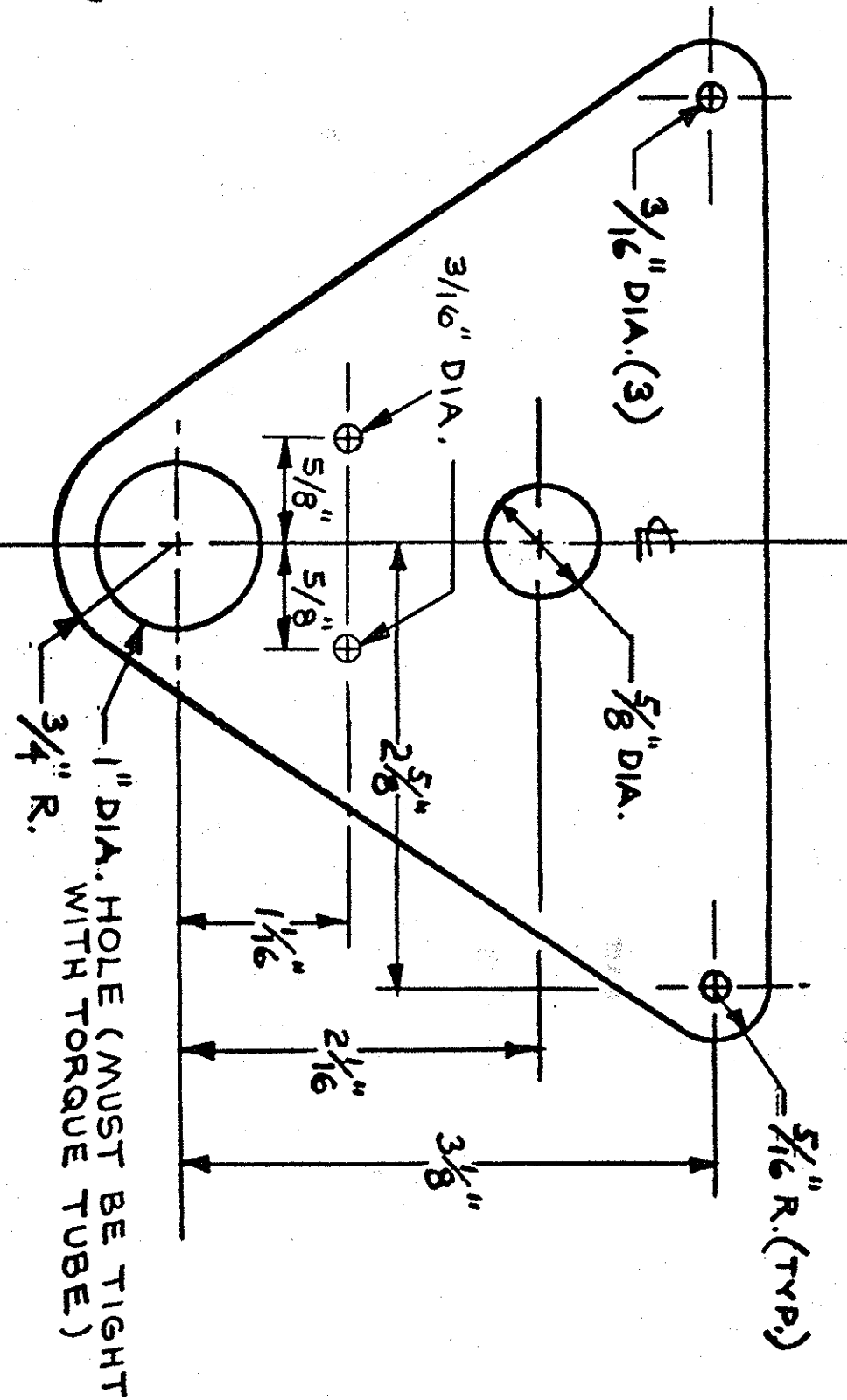
ANGLE BRACKET MODIFICATION

NOTE: THIS MODIFICATION SHOULD BE INCORPORATED IN ALL AIRCRAFT USING THE STANDARD TORQUE TUBE AND YOKE CONFIGURATION WITH THE RS-200 ANGLE BRACKET.

- INSTALLATION INSTRUCTIONS:**
1. FABRICATE ANGLE BRACKET FROM RS-201 AND ASSEMBLE AS SHOWN ON DRAWINGS.
 2. NOTE: AN 3-14A BOLTS ARE INSERTED FROM THE TOP THROUGH ANGLE BRACKET AND TORQUE TUBE. NUTS ARE ON THE BOTTOM. *(DO NOT INSERT BOLTS FROM BOTTOM AND PUT NUTS ON TOP)*
 3. TIGHTEN NUTS AND INSPECT ASSEMBLY FOR INTEGRITY.



ALLERON YOKE - 1/8" ALUM. [RS-500]
(SEE DWG. NO. 10 FOR LAYOUT)



ISON Aircraft
SUPPLEMENTAL SHEET
DATE: 3-22-96
DWG. TITLE: ANGLE BRACKET MODIFICATION
DWG. NO: 101

